

Twickenham & Richmond Tribune



Contents

TickerTape:

South Western Railway

The Tree Agency

Local Picture Postcard Column - St Mary's Church Memorial Plaques

Alan Winter

Crusader Travel

The George Under New Management

Council Tax Hiked by 4.99% Amid Growing Frustration

Last chance to see Expressions in Blue at Kew Gardens

Kew Gardens

Road closures in Twickenham ahead of England v Scotland

England Rugby

Stay and play with your little ones at Cambrian Community Centre

Cambrian Community Centre

First-ever zipline across Twickenham's Allianz Stadium for Families

Family Traveller Live

Ham, Petersham & Richmond Riverside News

Green Party

Higher Taxes & More Debt

James Knight

Centre for young disabled children awarded National Lottery funding

Small Steps

News from Holy Trinity Twickenham

Holy Trinity Twickenham

Richmond Liberal Democrats in 'Fake Newspapers' Row

Twickers Foodie - February Food And Drink News

Alison Jee

The Experience Package

Sunborn Gibraltar

Connections With Ukraine

World InfoZone

Norovirus levels in hospitals in England - pressure on NHS services is high

Teresa Read

Nominate your Community Heroes before the deadline!

Richmond Council

A twist of fate?

Deep Patel

Mark Aspen Review: Here You Come Again

Thea Diamond

Mark Aspen Review: A Real Race Around the World

Andrew Lawston

Mark Aspen Review: What Dreams May Come

Patrick Shorrocks

Mark Aspen Review: Mary, Queen of Scots

Mark Aspen

While The Sun Shines And 'Tis Pitty Shee's A Whore

Richmond Shakespeare Society

Spring Blooms in the Royal Parks

The Royal Parks

St Mary's Students Achieve BUCS Success

St Mary's University

England Team To Play Scotland At Allianz Stadium

RFU

England Men's A Squad To Face Ireland A At Ashton Gate

RFU

Frank: The key to our recent good away form

Brentford Football Club

Report and reaction: Leicester City 0 Brentford 4

Brentford Football Club

Editors: Berkley Driscoll, Teresa Read

TickerTape - News in Brief

South Western Railway

Altered train services due to Rugby at Twickenham **Saturday 22 February**

London Waterloo - Shepperton

- Between 1041 and 2241, all **Shepperton to London Waterloo** services are diverted via **Twickenham**.
- Between 1142 and 2342*, all **London Waterloo to Shepperton** services are diverted via **Twickenham**.

London Waterloo – Reading

- Services will depart **earlier** from **Reading** through most of the day (at xx:05 and xx:35).
- Trains departing **Reading** between 1730 & 2230 are to call additionally at **Putney and Vauxhall**.
- Services will also run **later** from **Richmond to Reading** before the match.

Altered train services and buses replace trains in the Teddington area **Sunday 23 February**

The lines in the **Teddington** area will be **closed all day** due to maintenance work.

- **London Waterloo to Shepperton** services will be diverted after **New Malden** and will terminate at **Hampton Court**, calling additionally at **Surbiton**.
- **Buses** will run between **New Malden and Shepperton via Kingston**.
- **London Waterloo to London Waterloo via Wimbledon and Kingston** services will be diverted after **New Malden** and will terminate at **Hampton Court**, calling additionally at **Surbiton**.
- **Buses** will run between **New Malden and Twickenham via Kingston**.
- The afternoon and evening **London Waterloo to Kingston via Hounslow** services will terminate at **Hounslow**.
- Some **London Waterloo to Windsor** services will be retimed to leave **London Waterloo earlier** and will make additional stops between **London Waterloo and Twickenham**.



The Tree Agency

darryl parkin

The Treehouse
25 King Edwards Grove
Teddington, Middlesex TW11 9LY
Telephone 020 8274 0107
Mobile 07960 123580
Fax 020 8274 0119
info@thetreeagency.co.uk
www.thetreeagency.co.uk

Local Picture Postcard Column - Part 289

St Mary's Church Memorial Plaques

1. Alexander Pope

By Alan Winter

For the next two weeks this postcard column will feature plaques that you can see on the walls of St Mary's Church in Twickenham's Church Street. As postcards go, they are relatively modern but show plaques of people who were and remain two of Twickenham's most famous and creative residents. We will start with Alexander Pope this week and next week move on to Sir Godfrey Kneller.

The first postcard of the memorial was produced by the church a few years ago. The two portraits of Pope were painted by William Kent c 1735 and the other circular portrait by Michael Dahl in c 1727.

Interestingly, both Pope and Kneller lived in Twickenham during the same period of the 18th Century and would certainly have known each other in what was a much smaller town in those days.

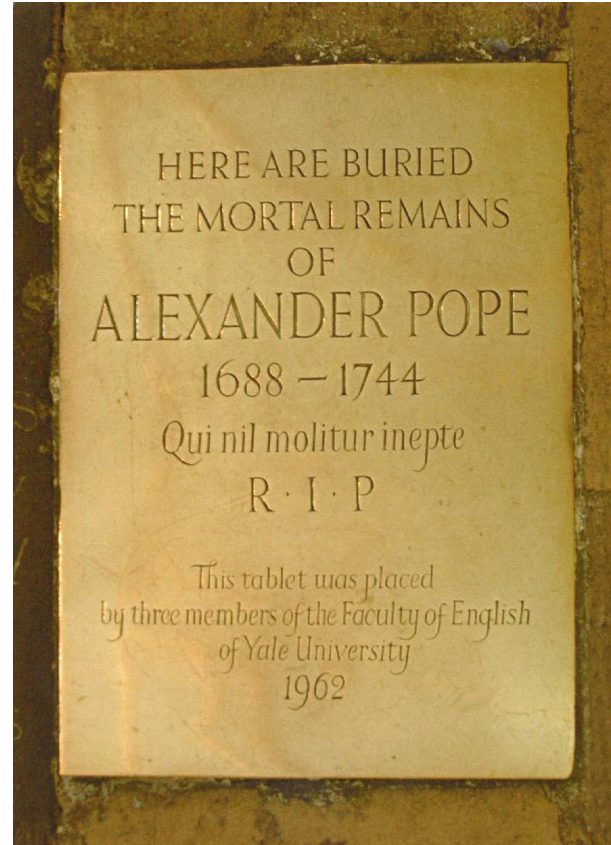
Alexander Pope (born May 21, 1688, London, England—died May 30, 1744, Twickenham, near London, aged 56) was a poet and satirist, best known for his poems, *An Essay on Criticism* (1711), *The Rape of the Lock* (1714), *The Dunciad* (1728), and *An Essay on Man* (1734).

As a child Pope survived once being trampled by a cow, but when he was 12 he began struggling with tuberculosis of the spine (Pott disease) which restricted his growth, so that he was only 4 feet 6 inches (1.37 metres) tall as an adult.

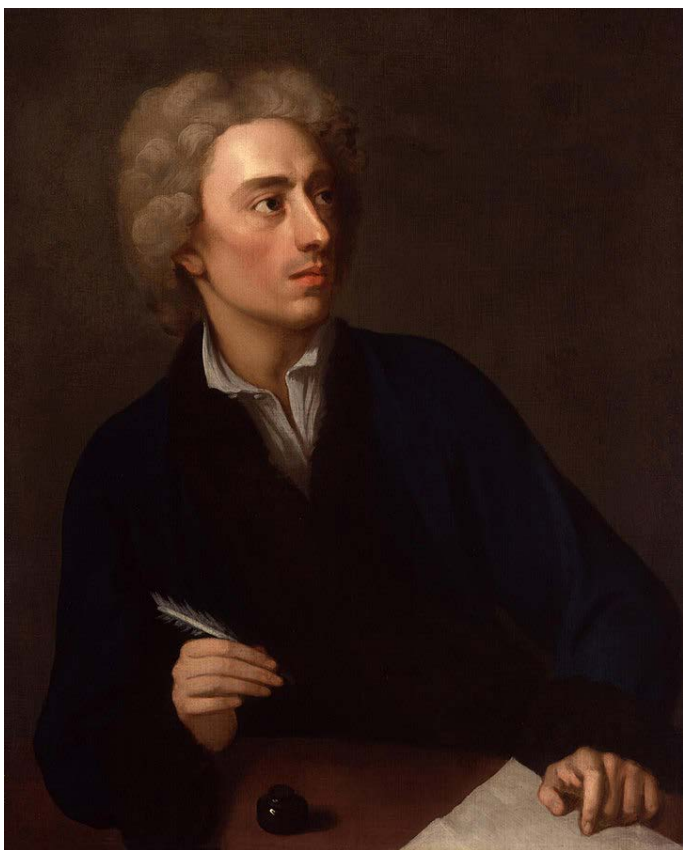
Pope and his parents had moved from Binfield to Chiswick in 1716. There his father died (1717), and two years later he and his mother rented a villa on the Thames at Twickenham, then a small country town where several Londoners had retired to live in rustic seclusion. This was to be Pope's home for the remainder of his life.



The money made from his translation of Homers *Iliad* and *Odyssey* allowed Pope to move to the villa at Twickenham in 1719, where he created his now famous grotto and gardens. Pope decorated the grotto with alabaster, marbles, and ores such as mundic and crystals. He also used Cornish diamonds, stalactites, spars, snakestones and sponge stone. Here and there in the grotto he placed mirrors, expensive embellishments for the time. A camera obscura was installed to delight his visitors, of whom there were many. The serendipitous discovery of a spring during the subterranean retreat's excavations enabled it to be



filled with the relaxing sound of trickling water, which would quietly echo around the chambers. Pope was said to have remarked that: "Were it to have nymphs as well – it would be complete in everything." Although the house and gardens have long since been demolished, much of this grotto still survives. The grotto now lies beneath Radnor House Independent Co-ed School, and is occasionally opened to the public.



Pope was at the forefront of changing garden fashions in the 18th century, advocating a new style of gardening which reflected the fashion for classical architecture and literature at the time. His ideas joined a wave of thought which encouraged moving away from the formal gardens of the late 17th century and which would later develop into the idealised pastoral landscapes advocated from the 1730s known as the English landscape garden. This change would pave the way for the famous designers of the 18th century including 'Capability' Brown and eventually Humphry Repton.

Pope also offered advice to his friends on how to lay out their gardens. One of these friends was Henrietta Howard, later Countess of Suffolk, who was building a villa at Marble Hill in Twickenham from 1723 and laying out a garden at the same time. Howard was an extraordinary figure in Georgian court society: King George II's mistress and a member of a dynamic circle of writers, poets and politicians.

In June 1724, Pope wrote to a friend saying that he was working on a plan for the garden at Marble Hill. We know that a few months later, he met with Howard and Charles Bridgeman (who would later become the royal gardener) at Marble Hill to discuss the proposals for the garden. Pope's involvement is immortalised in a poem by Jonathan Swift written in 1727 which describes Pope as the 'master' and 'contriver' of the garden at Marble Hill.

He died in his villa surrounded by friends on 30 May 1744, about eleven o'clock at night. On the previous day, 29 May 1744, Pope had called for a priest and received the Last Rites of the Roman Catholic Church. He was buried in the nave of the Church of England Church of St Mary the Virgin in Twickenham.

We are now only a month from the first Postcard Fair of 2025 which will take place at the Teddington Baptist Church in Church Road between 10.00 and 4.00 on Saturday 22nd March. With over a dozen dealers and tens of thousands of postcards for sale priced from pennies to pounds. With stamps and coins also for sale and light refreshments available all day, it's one of the most interesting ways of spending a few hours that you can imagine. Stick it in your diary!

With nearly 300 weekly columns behind me in the Tribune I am beginning to run out of postcards of our local area that I haven't already written about. So, my search for old postcards continues. I am always looking for old postcards and old photograph albums etc. The postcards can also be British or Foreign, black and white or coloured and of places or subjects.

If you have any that are sitting unwanted in a drawer, in a box in the loft or in the garage or under a bed, please contact me on 07875 578398 or alanwinter192@hotmail.com I would like to see them and I pay cash!

CrusaderTravel

020 8744 0474

crusadertravel.com

Escapology Experts

info@crusadertravel.com



Your friendly local Travel Agency
established in Twickenham since 1966

With over 50 years experience we pride ourselves on being able to offer an unrivalled service with attention to detail. Come and have a chat with us in our cosy office off the Church Street Square, we are open 6 days a week from 11am until 6pm (Closed Sunday)



The George Under New Management

Twickenham—The George, one of the oldest pubs in town, has officially changed hands. Following a long tenure under Greene King, it will embark on a new chapter.

Located on King Street, the Grade II-listed pub boasts a rich heritage dating back to at least the late 17th century, when it operated as a coaching inn. Over the years, The George has maintained a central role in the town's commercial and social life, hosting a variety of events, including auctions, community gatherings, and even inquests. Its enduring presence has made it a landmark steeped in local tradition.



The decision by Greene King to lease the premises comes amid a broader shift within the UK pub industry, which is facing increasing pressures from rising operational costs and changing consumer habits. The new leaseholders, The Morgan Pub Collective—who successfully manage establishments such as The Sussex Arms and Arthur's on the Green in Twickenham—are now at the helm.

While The George will continue to serve Greene King ales for the next six months, questions remain about potential changes to the menu, atmosphere, or pricing under the new management. The pub has been a popular destination for sports enthusiasts, featuring multiple screens that showcase live events. It remains uncertain whether this focus will persist.

Regular patrons have voiced cautious optimism regarding the pub's future. Many hope that The George will maintain its working-class character, resisting the trend of gentrification that has impacted numerous heritage pubs across London and beyond. As the community awaits further developments, The George's legacy continues to thrive as a part of Twickenham's history.

Council Tax Hiked by 4.99% Amid Growing Frustration

Critics accuse council of “gaming the system” to avoid a referendum while services decline

Residents of Richmond upon Thames will see their Council Tax bills increase by 4.79% this April, following a decision made by the borough’s Finance, Policy and Resources Committee last week. This increase, which will raise the annual Band D bill to £2,372.07, comprises a 4.99% rise in the borough’s share and a 4% increase in the Greater London Authority (GLA) levy.

While council leaders have defended the rise as “necessary to protect vital services,” critics contend that residents are paying more while receiving less. Complaints about neglected roads, inconsistent street cleaning, and declining local services are becoming increasingly vocal. The 4.99% borough increase also falls just short of the 5% threshold that would have necessitated a local referendum, leading some to accuse the council of intentionally keeping the hike below the legal limit to evade public scrutiny.

“Squirrelling Away” Reserves for an Election Year?

Critics have also questioned whether the council is stockpiling reserves to facilitate a lower tax increase next year, coinciding with the local elections. “They are squeezing residents now to announce a more palatable increase in 2026, just in time for voters to head to the polls.” Others have criticised the council for not doing enough to alleviate the extent of the increase, noting the substantial rises in councillor allowances and the large sums allocated to the capital programme (such as Twickenham Riverside Development), which, had they been more modest, could have reduced the magnitude of the tax increase.



Are Residents Getting Value for Money?

One of the most contentious issues remains the quality of services. Many residents have voiced concerns that, despite consistent tax rises, they see little improvement on the ground. Complaints include pothole-ridden roads, declining street cleaning standards, and unreliable waste collection. “There’s a serious disconnect,” said one local resident from Richmond. “We’re paying some of the highest Council Tax in London, yet it feels like the basics aren’t being maintained. Where is this money going?”

Referendum Loophole?

A key point of contention in the debate is the 4.99% rise, which falls just below the 5% referendum threshold. Had the council proposed a 5% or higher increase, it would have been legally required to put the decision to a public vote. If they’re so confident that these increases are necessary, why not let people vote on them?” said one resident from Hampton.

The Bigger Picture

As public dissatisfaction grows, the question remains how long residents will tolerate annual increases without tangible improvements in services. With local elections approaching next year, the council’s financial management is likely to become a defining issue. Whether Richmond residents will accept another year of rising bills—or demand a change—remains to be seen.

Last chance to see *Expressions in Blue* at Kew Gardens

Expressions in Blue: Monumental Porcelain by Felicity Aylieff, must end at Kew Gardens on 23 March 2025.

One of the UK's leading artists working in clay, Aylieff is renowned for her longstanding collaboration with the porcelain production workshops and artisan craftspeople of Jingdezhen, China, where she has continued her extensive research and produced works on a monumental scale. Her large-scale works, all hand-thrown and hand painted, are a towering testament to the centuries-old traditions which established Jingdezhen as the "Porcelain Capital" of the world.

This new exhibition, which has transformed Kew's Shirley Sherwood Gallery into a magical 'forest' of porcelain, encompasses a selection of new, specially created works, including incredible 5-metre-tall vases painted using a vibrant range of cobalt blue oxides in a technique known as Qing Hua, a signature of Aylieff's work.

Transporting visitors to the workshops of Jingdezhen, the exhibition also incorporates source materials, tools, sketch books and works in progress to tell the story of Aylieff's work, and the close collaborative relationship she has maintained with the craftspeople of the province for nearly 20 years. A specially commissioned film also explores Aylieff's artistic process and the creative life of this remarkable city, showcasing its artistic traditions, as well as the mammoth collaborative effort involved in throwing the largest vases in the exhibition.



Alongside Aylieff's 'new Ming' vases are a selection of Fencai enamel vessels, hand-painted with stylized designs depicting an array of plants found in China and across the world. Additional works in this series draw inspiration from botanical illustrations in the Shirley Sherwood Collection, aligning Aylieff's passion for plants and gardening with her spectacular ceramics, including designs inspired by tulips, lilies, peonies and hibiscus.

This new exhibition represents the largest solo exhibition of Aylieff's career to-date, and has been fantastically received since opening to visitors in October 2024.

Works from the Shirley Sherwood Collection can also be seen on display in Gallery Six. Curated by Dr Shirley Sherwood, *Botanical Blues* showcases works from botanical artists including Susannah Blaxhill, Jinyong Feng and Ursula Romero, depicting many remarkable plant species which can be found in Kew's record-breaking Living Collection.

On Thursday 6 March 2025, Felicity Aylieff will be joined by historian and broadcaster Lars Tharp for a special *In Conversation* event, which will take place in the Marianne North Gallery at Kew Gardens.

Felicity Aylieff says:

“It’s been wonderful to see how visitors have been enjoying *Expressions in Blue*, and I’m delighted to have been able to share the ‘magical’ Jingdezhen porcelain with many more people after working on the exhibition for several years - it really does have to be seen to be believed! Telling the story of Jingdezhen through these works and the accompanying film within the exhibition has been a real privilege, and I’m thrilled that it has allowed many more people to explore the creative collaborations which I’ve fostered in this incredible city, and which continue to inspire me.”

Maria Devaney, Galleries and Exhibition Leader at RBG Kew adds:

“Showcasing the pinnacle of ceramic artistry in the Shirley Sherwood Gallery at Kew Gardens has afforded our visitors a wonderful opportunity to explore Felicity Aylieff’s remarkable work and extraordinary techniques, drawing from centuries of artisan tradition, and from Kew’s rich history and heritage. In unveiling Felicity’s beautiful pieces through this unique exhibition, we have been able to further expand the horizons of art within the unique setting of Kew Gardens.”

An accompanying book is available, published by Kew Publishing.

This exhibition has been made possible through close collaboration with [Adrian Sassoon](#), the UK’s leading gallery for international, contemporary works of decorative art.

At the Royal Botanic Gardens, Kew, we’re dedicated to harnessing the power of plants and fungi to end the extinction crisis and secure a future for all life on Earth.

With Kew’s world-leading research, global partnerships and beloved gardens – home to the world’s most diverse collections of plants and fungi – we’re using our trusted voice to shape policy and practice worldwide.

As a charity we rely on the critical support of our visitors, not only to sustain the gardens, but to protect global plant and fungal biodiversity for the benefit of our planet and humanity.

Royal
Botanic
Gardens **Kew**

Road closures in Twickenham ahead of England v Scotland

From England Rugby

On Saturday 22 February 2025, England will take on Scotland for the Calcutta Cup at the Allianz Stadium, kicking off at 4.45pm. It is anticipated that Whitton, London, and Rugby Roads will close between 2.45 and 4.45pm, and then again between 6.15 and 9pm.

The CPZ will be in operation between 11am and 11pm and shuttle buses will run to the stadium from Old Deer Park, Richmond and Hounslow East Underground station.

Live traffic updates will be posted on X/Twitter through the [@rfuhometurf](#) account on the day.

Details of all upcoming events are available on the [England Rugby website](#).



Stay and play with your little ones at Cambrian Community Centre

From Cambrian Community Centre

Cambrian Community Centre is offering term-time only sessions for children aged 0 to 4 years and their parents and carers to play and learn.

This weekly Thursday morning session gives parents and carers the opportunity to let their child's imagination run wild in a safe, friendly and educational environment while they meet other local parents and carers.

Enjoy the fun as the Cambrian Community Centre transforms into a wonderland of trikes, dinosaurs, dolls, cars, books, blocks, tents, and tunnels, all designed to encourage independent play and creativity.

- **Date:** Every Thursday, term time only, 9.30 to 11.30 am
- **Location:** Cambrian Community Centre, Richmond, TW10 6SN

The sessions are delivered on a 'pay as you feel' basis, making it accessible for everyone.

Find out more about the [stay and play sessions](#).



First-ever zipline across Twickenham's Allianz Stadium for Families

With just one month to go, the countdown is on until the inaugural [Family Traveller Live](#) and [Sailawaze Live](#) shows take over the Allianz Stadium in Twickenham on 22 & 23 March 2025.

If you haven't booked this year's family holiday or your next cruise adventure, then this is the weekend for you. Family Traveller Live and Sailawaze Live bring together more than 50 of the best holiday destinations, cruise lines, hotels and travel experts who have created action-packed activities for you to enjoy in one of London's most iconic venues.

What's more, families can pick up tips and tricks from travel experts at the seminar stage, sponsored by CruiseCritic, chat with representatives from cruise lines and tourist boards, get advice, and book the best, exclusive holiday deals.



Over this interactive weekend, families can get their adrenaline fix from thrill-seeking activities, including abseiling from the stadium roof – breathtaking views guaranteed. Royal Caribbean, famous for bringing imaginative and first-time experiences to its innovative fleet of ships, is even bringing the first-ever zipline across the pitch. Adults and kids alike can put their athletic abilities to the test, trying out a wide range of exhilarating sports, from ski and surf simulators, ice hockey, crazy golf and archery, to parkour, pickle ball, climbing walls and plenty more.

Tickets start at just £55 (for a family of four), with kids under 5 going free – and include access to most activities. Those looking to partake in the premium experiences (zipline and abseiling) will need to pay an additional booking charge of £25-30pp. To book, head to <https://live.familytraveller.com/>

Open from 10am – 7pm Saturday and 10am – 6pm Sunday, the stadium offers free visitor parking in the West and North Car Parks. Plus, there is a variety of different food options and seating around the stadium including vegan, vegetarian and kid-friendly options.

Where else will families get to explore the world's best travel destinations and unbeatable holiday deals all in one space? A selection of brands confirmed include: Visit Florida, Seychelles Tourism, Experience Tunisia, Experience Oman, Visit St Pete Clearwater, Royal Caribbean, Audley Travel, Trailfinders, Hurtigruten, Simpson Travel, Experience Travel, JA Resorts, H Hotels and Ambassador Cruise Line.

Andrew Dent, Founder and CEO of the Family Traveller brand comments: *"We're so looking forward to welcoming families to the inaugural Family Traveller Live and Sailawaze Live weekender. We can't wait to see families and holiday lovers zipline over Allianz Stadium, Twickenham one minute and then sign up for a once-in-a-lifetime getaway the next."*

Dent continues: *"We are reimagining what a consumer travel show should look and feel like and we want attendees to meet new brands and gain some holiday inspiration for this year and years ahead."*

Finally, it wouldn't be a trip to the Allianz Stadium, Twickenham without some rugby thrown into the mix. Across the weekend, visitors can book stadium tours and visit the World Rugby Museum, as well as enjoy coaching clinics on the day for children of all ages. For the smaller children, there will be kids' activity zones and soft play area.





**YOUR COUNCILLOR
ANDREE FRIEZE**

GREEN COUNCILLORS WORKING HARD FOR YOU

Your five Green councillors continue to push the Lib Dems to take stronger action on clean air, the climate crisis and affordable housing.

Former Green MP Caroline Lucas successfully campaigned to introduce a Natural History GCSE, which was meant to be brought in this September. The Labour Government has postponed it and this vital educational tool - supported by BBC nature broadcasters Mary Colwell and Chris Packham, and The Wildlife Trust, among others - is threatened with cancellation. Cllr Chas Warlow persuaded the Council to write to the Government urging it to implement the new Natural History GCSE this year.

As the Opposition, we submitted a response to the Council's Draft Air Quality Action Plan. **Andrée says:** *"We are really concerned this Plan has very few measurable actions or specific targets, and is simply a list of items. Without objectives, the Council simply can't measure its progress."*

In Mortlake, Green Cllr Niki Crookdake - along with local campaigners - pressured the developers of the Stag Brewery site to increase their offer of affordable housing from 7.5 per cent to 12 per cent.

Greens have also convinced the Council to reduce the amount of our waste it incinerates, given that burning it is just as polluting as using coal power.

Cllr Chas Warlow says: *"I'm pleased to see the Council recognises the climate and health risks caused by emissions from incineration and is taking action to reduce them."*



NEW SPORTS FACILITIES FOR YOUNG PEOPLE



The Council consulted residents on installing a Multi-Use Games Area (MUGA) on the football pitch by Beaufort Court last autumn. There wasn't sufficient support for a MUGA, but Councillors proposed the site be upgraded to provide new basketball and better football facilities instead.

Andrée says: *"Since the basketball hoops were removed from the Hawker Centre, young people in Ham have nowhere to play basketball free of charge. I am very happy to support plans to resurface the existing pitch and install mixed-use goals to allow both football and basketball to be played."*

Cllr Chas Warlow says: *"Concerns were raised during the consultation about the impact on the nearby badger sett. The new goals and hoops will be about 30 metres from it, and all excavation will be done by hand to minimise any disturbance."*

"I am pleased young people in Ham will have somewhere to play basketball and football properly, for free."

ANDREE FRIEZE: WORKING TO GET THINGS DONE IN HAM, PETERSHAM AND RICHMOND RIVERSIDE

Higher Taxes & More Debt

By James Knight

13 February 2025 - **The Finance, Policy and Resources Committee** convened in the gilded Saloon at York House on Thursday evening to discuss financial measures affecting residents across the borough. The meeting, chaired by Councillor Gareth Roberts, addressed employment support, housing policies, budget oversight, and tax increases, with members weighing the necessity of investment with a distinct lack of concerns on the budgets of residents who will have to stump up even more of their hard-earned money.

New Employment Initiative: “Connect to Work”

The committee unanimously approved the Connect to Work programme, a Department for Work and Pensions (DWP) initiative designed to reduce the number of disabled people on state benefits and put them back into the workforce. The scheme will be delivered locally rather than through an external contractor.

Councillor Phil Giesler, backing the decision, stressed that Richmond’s in-house employment services would be well-equipped to deliver targeted support. “By keeping delivery in our hands, we ensure a more responsive service tailored to local needs,” he argued. However, Councillor Robin Brown, the finance lead member, raised concerns about whether Richmond was taking on financial risk by assuming responsibility. Council officers assured members that the DWP fully funded the scheme, mitigating any risk to the borough’s finances.

Second Homes Council Tax Premium Stays Unchanged

The committee resolved to maintain the current 100% premium on second homes and long-term empty properties, dismissing appeals for exemptions beyond those mandated by the Government. The decision, made following a public consultation in late 2024, reflects the council’s objective to deter properties from remaining vacant in a borough experiencing housing shortages.

Council officials provided evidence that the premium had effectively encouraged property use, although some residents contended it disproportionately affected those unable to sell inherited properties. The measure remains politically contentious, with opponents labelling it a “stealth tax” on those who cannot occupy or sell their homes for reasons beyond their control. The administration, however, defended the policy as a necessary step to alleviate the housing crisis.

Council Budget Overspend Raises Questions

The Quarter 3 Corporate Monitoring Report painted a mixed picture of the borough’s finances, revealing a projected overspend of £1.924m on the General Fund. The most significant financial pressures stemmed from adult social care and homelessness services, both of which have experienced increasing demand.



While committee members acknowledged the pressures facing social care, some councillors voiced frustration at what they referred to as “predictable overruns,” particularly regarding temporary accommodation costs. The Finance Director attributed the overspend to unexpected factors, including inflationary pressures and lower-than-anticipated planning income.

New Fees and Charges Approved

The committee voted to increase various council service fees from April 2025, citing inflation and rising operational costs. The move, expected to generate additional revenue, sparked debate over whether residents were being asked to bear too much of the financial burden.

Among the notable increases are higher fees for parking permits (the 50% discount for low-emission vehicles is to be removed), car parking fees (an 11% increase), planning applications, and venue hire. The administration justified these adjustments as necessary to maintain service levels, contending that inflation-linked rises were preferable to cutting essential services. However, critics have accused the council of placing excessive pressure on residents during a time of great economic strain, with parking fee increases significantly exceeding inflation.

Council Tax Rises by 4.79% Despite Public Concern

Perhaps the most contentious item of the evening, the Revenue Budget Strategy and Council Tax Report, confirmed a 4.79% increase in Council Tax for 2025/26. This includes a 2.99% rise in the core council charge, an additional 2% for adult social care, and a 4% increase for the Greater London Authority (GLA) precept.

Administration members insisted that the increase was inevitable due to a lack of central government funding and the rising demand for services. However, critics questioned the council's approach to spending and highlighted that the extra tax was more about nice-to-have capital projects than essential spending. They referenced Ronald Reagan's famous 1986 speech on deficit reduction, which criticised big spenders: "Every dollar the government spends comes out of your pockets. Every dollar the government gives to someone has to first be taken away from someone else."

Capital Programme Expands

The council outlined an updated Capital Programme, including investments in affordable housing, transport, and climate initiatives. Major big schemes include the Twickenham Riverside redevelopment, school expansions for special educational needs (SEN), and additional funding for electric vehicle infrastructure.

The six-year programme now totals £303m, with the council planning £125m in new borrowing over the period. While the administration framed the programme as an "investment in the borough's future," sceptics warned against accumulating long-term debt, particularly given the council's financial pressures. One resident who watched the meeting said, "This is not the time for the council to indulge in big spending on non-essential schemes when the Labour Government is consulting on changing the grant formula to favour inner cities at the expense of areas like Richmond."

Treasury Strategy and Prudential Indicators Approved

Finally, the committee approved the Treasury Management Strategy for 2025/26, a statutory requirement outlining how Richmond manages its investments and borrowing.

The strategy encompasses new investment criteria and a liability benchmark, reflecting the changing economic landscape and government borrowing regulations. Officials noted that high interest rates have made external borrowing less attractive, resulting in a greater reliance on internal borrowing to finance capital projects. While the strategy itself was largely non-controversial, some members questioned whether the council should adopt a more aggressive stance on investment returns, particularly in light of the uncertainty surrounding public sector funding.

Committee Work Programme

The committee concluded with a review of its Work Programme, outlining key issues for upcoming meetings. One of the most significant items returning to the agenda is the Twickenham Riverside redevelopment, which will return to the committee on 28th April where the latest estimate of costs will be released. Additionally, the council will discuss its strategy to address violence against women and girls.

Centre for young disabled children awarded National Lottery funding

From Small Steps

Local charity Small Steps is celebrating after being awarded £225,000 over three years in National Lottery Reaching Communities funding.

The new funding, which distributes money raised by National Lottery players for good causes, will enable [Small Steps](#) sessions to be expanded to support more children in need.

Sarah Olney, MP for Richmond Park visited Small Steps and said: *“It’s always such a pleasure to come and visit Small Steps and to see the amazing experiences they give to children and their families. I am delighted to see how the organisation is thriving and continuing to provide the vital education that children need.”*



Founder Anita Coppola MBE said early intervention is key to Small Steps work, *“Small Steps works on all areas of a child’s development, with a focus on the physical. Helping the children develop everyday skills that are more challenging for them to achieve than for some children, such as sitting, balancing, standing and taking their first steps.”*

“We’re delighted that The National Lottery Community Fund has recognised our work in this way. Evidence shows that the early years are a transformative time to support children, particularly those with neurological conditions, as their brains are still developing, so it’s critical that children get as much support as possible at this point.”

“To ensure sessions are accessible to all, regardless of financial circumstances, Small Steps is a free service for every family. The funding from Reaching Communities will enable us to help many more families that need us.”

“We have an open-door policy and also make great tea!”

Based in Worple Way in Richmond, Small Steps has supported more than 1000 disabled children and their families since it started in 1998. It runs free weekly structured sessions for young children with physical disabilities and provides a much-needed support network for their families.

There are lots of ways you can get involved – whether that’s by donating, taking on an event or volunteering your time.

Find out more about [how you can help](#).



News from Holy Trinity Twickenham

Saturday 1st March 2025 at Holy Trinity Twickenham

We are looking forward to the much-awaited return of one of Holy Trinity's favourite social events, the Big Quiz on Saturday 1 March.

Tickets are £10 per adult, to include a fully stocked cash/card bar, nibbles and of course a fantastic range of questions from our very own quizmaster Giles. With tables of up to 10 people, you can form your own team, or we can find a team for you to join.

[Click here to reserve your tickets for the Big Quiz.](#)



THE GREEN POP UP CAFE

THURSDAYS

10.30-12.00

The Green Room
Holy Trinity Twickenham
Twickenham Green
TW2 5TS



A community space where
everyone is welcome to pop in
for refreshments, friendly chat and activities



HOLY TRINITY TWICKENHAM

Richmond Liberal Democrats in 'Fake Newspapers' Row

In March 2024, the Liberal Democrat Party reached an agreement with the Society of Editors, pledging that all campaign materials designed to resemble newspapers must feature their party name in the masthead. Despite this national agreement, the Richmond Liberal Democrats have violated it. They continue to distribute a publication titled **Twickenham HERALD**, which mimics a local newspaper while downplaying its partisan origins.

The Twickenham Herald features a masthead reminiscent of traditional newspapers, yet its disclaimer – “Free leaflet paid for by the Liberal Democrats and delivered by volunteers” – is printed in a much smaller font size below. This design choice risks misleading residents into thinking that the publication is an independent news source rather than party-political material.

Twickenham HERALD

Covering the Hamptons, Twickenham, Teddington, Whitton, St Margarets and Strawberry Hill.
Free leaflet paid for by the Liberal Democrats and delivered by volunteers.

Printed by DC Thompson, Discovery Print, 80 Kingsway East, Dundee, DD4 6SL. Published and promoted by Twickenham and Richmond Liberal Democrats at 108 South Worpole Way, Merlake, SW14 8TN.



COST OF LIVING CRISIS: GOVERNMENT FAILS OUR RESIDENTS...

High inflation, rising supermarket costs and soaring energy bills have hit low-income households hard. To make things worse, the Labour government has now taken away the Winter Fuel Payment from most pensioners.

The change has been pushed through with even Keir Starmer admitting

that the government hadn't done a proper impact assessment.

Twickenham MP Munira Wilson said, 'The Liberal Democrats have opposed this unfair Labour cut which will push many pensioner households into fuel poverty. I'm proud to have voted against this measure in parliament.'



Munira Wilson and other Lib Dem MPs in parliament voted against the government's cut to the winter fuel allowance.

...AS LOCAL LIB DEM COUNCIL STEPS UP TO PROTECT THEM



The Lib Dems are stepping up locally and protecting our most vulnerable residents who have been failed by the Conservatives and Labour on the cost of living crisis.

But the Lib Dems on the local council won't just sit by and watch pensioners suffer in our area.

The council is providing a £100 winter fuel payment to many low-income pensioners who are narrowly missing out on the government scheme. This is on top of an existing council initiative which pays up to £170 of energy bill costs for eligible households.

The Lib Dem council is also supporting community spaces

to welcome people in the colder months, providing free school meal vouchers in the holidays and helping with benefit claims.

Cllr Robin Brown, council finance lead, said: "This council has dedicated £4.5m to help people through the cost of living crisis, so that they can feed the family and keep warm. The Lib Dems are determined to support residents at this difficult time, and I'm proud of the actions we are taking."

Back the Lib Dem campaign at: LibDems.org.uk/Winter



Printed by DC Thompson, Discovery Print, 80 Kingsway East, Dundee, DD4 6SL. Published and promoted by Twickenham and Richmond Liberal Democrats at 108 South Worpole Way, Merlake, SW14 8TN.

newspapers to protect media integrity. However, the Richmond Liberal Democrats appear to be ignoring his guidance, consistently publishing materials that do not meet the standards he set for the party.

You can read the press release published by the Society of Editors [HERE](#)

February Food And Drink News

I love my air fryer! And I'm so pleased that forward thinking companies like **Strong Roots** are now making products aimed specifically at air fryer users. **Air Bites** enable you to produce piping hot, crispy vegetable packed bites in just 10-12 minutes. They are ideal for a warming, satisfying snack, but also make an easy party platter combo. Available in three flavours: Crispy Spinach & Carrot; Crispy Pea & Lemon (our favourite) and Crispy Veg, they really are a great freezer standby. True to Strong Roots form, the range is certified vegan, low in saturated fat and has no artificial colours or flavours. Available from: Waitrose, Sainsbury's, ASDA, Morrisons and Tesco. Around. £2.95 for a pack



A good pair of kitchen scissors is essential, and I've discovered a brilliant pair from **Deer & Oak**...and the handles are made from recycled coffee grounds! Whether you're slicing through meat, herbs, flowers or packaging, these ultra sharp kitchen scissors are built to handle every task - a must-have in a busy kitchen. They even have a bottle opener, can opener and a screw lid opener as an integral feature. They are a bargain at £7.95 from [Amazon](https://www.amazon.co.uk)

Gut Health Shot. This new flavour has zingy lemon, sweet honey and soothing lemon balm and is enriched with chicory root fibre for Gut Health. Packing the raw pressed power of nature into a 60ml shot, it contains 100% of your recommended daily allowance of vitamins A, B, C, & D. Available from Waitrose stores (RRP £6.25/420 ml dosing bottle). It joins the other flavour in the range - Raw Ginger and they are both really delicious.



I know it's still cold outside but it's still worth making room in your freezer for these yummy new ice creams from **Häagen-Dazs...Stickbars**. The Stickbars



feature favourite flavours of the ice cream, now wrapped in an extra thick Belgian chocolate coating to crack into for the ultimate sweet treat. Available in Salted Caramel, Cookies & Cream, and exclusive to Co-op, Macadamia Nut Brittle. Also Mango & Passionfruit, and exclusive to Tesco, Raspberry & Peach. Available in major supermarkets nationwide, with prices around £4.25 for a pack of three

Porridge, is of course part of the three bears story, and there is a German oat brand that's appropriately called **3Bears**. It's recently launched its porridge, overnight oats and pocket porridge bars into the UK market. The Overnight oats are super easy to make, packed with fruit and whole grains and make a natural and very convenient breakfast option. The flavours are Splendid Strawberry, Banana Split, Iced Coffee, Golden Mango and Coconut Cocoa. Just add milk of your choice and leave it in the fridge overnight and you can wake up to the perfect chilled breakfast. The porridge is available in a range of flavours including Original, Finest Cocoa, Apple & Cinnamon, Triple Berry, Banana & Poppy Seed or Fruity Coconut. Pocket Porridge is the ideal partner for a hectic day. This convenient option promises to keep you fuelled and focused. The bars come in six delicious flavours including Triple Berry, Triple Nut, Splendid Strawberry, Finest Cocoa, Banana & Poppy Seed, Apple & Cinnamon. All of the products have short, easy-to-read ingredient lists, are rich in fibre, free from added sugars, and in recyclable packaging. 3Bears Overnight Oats, Porridge, and Pocket Porridge are available online at <https://3bears.co.uk/>



If you're into energy drinks, then this one is definitely for you: **Tenzing** has launched the UK's first natural energy drink crafted to power people through winter - Fiery Mango. The recipe boasts a powerful combination of natural ingredients from Vitamin D and C to Magnesium and Lion's Mane, making it the first energy drink to be designed for winter, when energy levels and mood are low. It's powerful: containing a 160MG punch of natural caffeine (from green coffee), plus 100% of your daily dose of Vitamin D, sourced from Pine Trees and Magnesium (173MG). In addition, the recipe uses 500MG of Lion's Mane Mushrooms, famed for their mood, immune boosting and antioxidant properties. Available in Tesco stores nationwide (£2.10 for 330ml) and on the Tenzing shop

And while we're on the subject of fiery flavours, we love the **Gran Luchito** range of Mexican foods and spices. It has everything needed to bring the vibrant taste of Mexico straight to our kitchens. From Soft Taco Wraps to hold your chosen fillings, to crunchy Tortilla Chips and tasty Salsas, sauces and pastes, they are a great standby. I like to use one of the pastes spread on toast, then topped with mashed avocado and a poached egg...yum! Or try spreading it on ready rolled pastry to whip a few canapes in a matter of minutes. In major UK supermarkets, including Waitrose, Sainsbury's and Tesco.



I haven't seen the latest Bridget Jones film yet, launched last weekend, but fully intend to very soon. Bridget is synonymous with Chardonnay, so in the meantime, I had a very pleasurable journey down a 'vinous memory lane' this week, when I had some of this delicious **Dark Horse Chardonnay**. It's a rich Chardonnay with notes of baked apple and ripe stone fruit, layered with buttery notes of toasted oak, but still with refreshingly crisp acidity, culminating in a smooth, lingering finish. Around £10 a bottle from Tesco and other major retailers.



The Experience Package

Enjoy an exciting day out with the dolphins, a dinner under the stars and unwind in your extra comfortable king size bed.



Package includes:

- Dolphin trip for 2®
- Dinner for 2®
- Bottle of cava at arrival
- Total £280.00

Terms & Conditions: offer subject to availability

reservations@sunborngibraltar.com

sunborn
GIBRALTAR
YACHT HOTEL RESORT



Connections With Ukraine

By Teresa Read

An interesting article in a recent New Scientist looks at the origins of people who spread across Eurasia thousands of years ago.

Apparently, Britain experienced a massive influx of people who could trace their ancestors to horse-riding nomads of the Eurasian steppes: the Yamnaya.

A DNA study has shown that the Yamnaya may have originated from different areas with people settling between the Rivers Dnipro and Don in Ukraine; thus, there are European populations with Yamnaya-related ancestry. The National Geographic says that many of us are a mix; a typical European would be roughly equal parts Yamnaya and Anatolian farmer. Of course, there have been influxes of people from various countries in other areas of the world and we only need to look at our own country to see this.

To return to Ukraine, molecular dating has revealed that an area in Ukraine was occupied by humans 1.4 million years ago, making it one of the oldest hominin sites in Europe, possibly the oldest; the site, at Korolevo in western Ukraine, has been studied since the 1970s.

My contact with Ukraine took place when I was involved with schools around the world and the Stockholm Challenge (supported by the EU). After teaching for many years, I began to work internationally, and it was at this time I was introduced to a Ukrainian school in Melitopol; some of the correspondence with members of the school can be read at this [link](#)

Unfortunately, Melitopol, in the Zaporizhzhia Oblast, has been under Russian control since March 2022; it has been annexed by Russia but is still recognized internationally as sovereign territory of Ukraine.



Flag of Melitopol

Ukraine: <https://www.worldinfozone.com/facts.php?country=Ukraine>

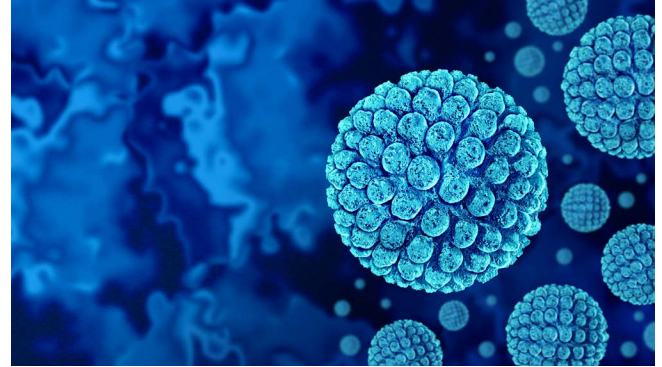
Norovirus levels in hospitals in England - pressure on NHS services is high

Teresa Read

Data published shows that 784 patients a day were in hospital with norovirus in the week ending 19 January 2025, up from 650 the previous week. Levels are up almost 80% compared to the same period last year.

Flu rates have dropped since their peak but remain almost 2.5 times higher than last year, with 3,833 patients in hospital with the illness on average each day last week, including 176 in critical care.

Other winter viruses are adding to the strain, with over a thousand patients on average in hospital with COVID-19.



Amid this increased demand, hospitals remain extremely busy.

Nominate your Community Heroes before the deadline!

Have you nominated your Community Hero yet? This year's deadline is fast approaching on **Wednesday 26 February at 11:59pm!**

This is your chance to shine a spotlight on the incredible individuals, groups, projects and businesses making our borough a better place to be, for everyone. These unsung heroes selflessly volunteer their time, energy and resources without expecting recognition - but we believe they deserve it!

We're all likely to see outstanding examples of this in action, and [as evidenced by our previous heroes](#), it comes in many creative and dedicated forms.

Whether it's looking after those who are more vulnerable or isolated, creating stronger, healthier and more inclusive communities for their neighbours or putting in the volunteer hours to enrich our environment and people's lives, we want to say thank you and help raise the profile of important local voluntary work.



But we need your help!

Nominating is simple [through our online form](#). If you would prefer a paper form or to nominate over the phone, just let us know at events@richmond.gov.uk or 020 8891 7955.

There are 10 award categories that you can nominate within, recognising contributions of all kinds:

Business Contribution in The Community
Communities Together
Community Group of the Year
Community Project of the Year
Community Spirit Award

Environmental Award
Lifetime Achievement
Outstanding Volunteer
Trustee of the Year
Young Person Achievement

Read the [criteria for each category](#) on our website.

Shortlisted nominees will be honoured at an awards ceremony with councillors and other community partners in April!

A twist of fate?

By Deep Patel

~Life through the eyes of a Twickenham shopkeeper~



Most people have heard the phrase “a twist of fate”, but this past week, I felt I physically experienced it...

It was a normal evening in my newsagents shop and I was doing what all shop keepers do (no not sitting around eating chocolate and drinking cola -although I have been known to do that many a time)...I was actually refilling the soft drinks fridge and tidying the shelves and then I sat down behind my counter and must have twisted my foot in an odd direction which led to me feeling a sharp shooting pain across my ankle. Like all men, I stupidly decided it was nothing and carried on walking around and going about my normal activities...of course the pain got worse as the evening progressed. I sat with my family for dinner and realised I could barely walk after dinner (I hadn't eaten too much, I meant it was my ankle pain). I began to worry a little as I had never felt such pain there, I didn't want my family to worry or anything so I just sat and waited until all of them had gone up to bed, then I silently dragged myself up the stairs, clinging onto the banister, literally dragging myself up (that's how bad the pain had become). I could tell at this point that the pain was nerve related as the pain was shooting and awful...I couldn't even undress into my night clothes as bending my ankle was just too painful. I nearly decided at that point to sleep in my jeans (we've all been there and done it at some point, it's not great). I finally clenched my fists and took the pain of undressing and into my night clothes. I then dragged myself towards my bed and onto the mattress. Any slight turn was really painful in my ankle. I thought to myself pheeew...now I can “sleep it off” and by the morning I will be fine! I slept well that night (surprisingly...must have been the good karma I had accrued from saving all the little insect lives over the years?) but when I woke up and put my foot onto the ground...oh my gosh...I was nearly in tears...I couldn't even walk to the door and dragged myself along again. The twist had obviously pinched or caught a nerve there and it was exceptionally tender again with me awakening (come on good karma I thought to myself?) ...I got dressed and went downstairs. My brother saw my condition and said, go in and sit on the sofa and relax for the day, he said he would take over running the shop (which is very unlike him as he always has so many other jobs to complete). So I went and sat on the comfy sofa in the cozy, warm room behind my shop counter (it was dark and freezing outside, it didn't take much convincing). So what did I do with my day whilst sat cozy on the sofa?

I spent the morning reflecting on life...I put some meditation music on through YouTube and watched it on the telly wrapped in a blanket with a pillow behind my head and an ice-pack on my ankle where it was hurting...it was an usual situation of having some time out of

work but being unable to move without awful pain...BUT it was a great time for catching up with paperwork (left over from 2024 –yes I still have some to catch up on). Whilst doing the paperwork, it dawned upon me how difficult life was whilst not being able to walk without terrible pain...I kept thinking about all those people in the world right now who could be facing similar or worse even, and how it would be if I had to live with such a condition permanently. I developed an incredible empathy for those who had to live with such a condition...sitting all day in that condition of pain and suffering made me think in ways that I had never thought of. How the simple pleasures in life were actually the real treasures, the things I thought were to be cherished like holidays, nice clothes and posh food were suddenly not as important when I was in pain, all that was my treasures at this point was if I could only stand up without pain, or put on my shoes without screaming from the sharp shocks that caused me.

The ice pack worked and after an hour of applying it, the area had gone numb and ankle pain had almost miraculously gone (and the good karma must have helped of course). I stood up that evening without pain for the first time in 24 hours...I felt as though I was reborn, like I had been given “another chance at life”, I felt like the richest man alive and was simply overflowing with gratitude for being able to walk, being able to put my shoes on, being able to wear socks on and through doing so, I felt as though I had won the lottery and that I suddenly had everything that I desired in life all at once. It was an extremely unexpected and humbling experience, and in the end, I came out of it more focussed and grateful for life with an underlying love for life’s “little joys” upon realising that these little joys actually were life’s biggest joys, and if taken away from us, life suddenly felt unliveable. That night I slept with a smile on my face, knowing that no matter what, the basics of life are life’s biggest gifts, and remembering how unbelievably fortunate I was to have these basic functions that I could once again perform without pain...who would have thought that walking, putting on a pair of socks and standing up were the real luxuries and treasures of life?

It’s true that I started the day in awful pain, cursing that moment the evening before when I had twisted my ankle...but I ended the day feeling happier, more content with an almost overwhelming and new found deep gratitude for life’s simplicities...it reminded me of a Buddhist belief, that suffering was not a punishment from the divine, rather it is actually a gift...as it is when we suffer that we grow spiritually and realise what is actually important in life...and so the “twist” of my ankle was nothing less than a “twist of fate”...something that may have caused me suffering for a short time, but has left me with a new found gratitude and attitude towards living...one that will remain with me for the rest of my life.

Remember...

“Everyone wants happiness, no one wants pain, but you cannot have a rainbow without a little rain...”

MY CREATURE-KINDNESS TIP OF THE WEEK...

Make use of high-frequency plug-in pest stopping plugs into each room, buy ones with good reviews online and follow the instructions, we stock them at Meet & Deep Newsagents here too, they work really well to keep ALL “pests” away, without harming any...good karma always! For ANY specific tip to stop any “pest” or insect KINDLY (for good karma/blessings), email me: thedeepatel@gmail.com or join my Facebook page: “INSECT LOVERS UNITE”



Here You Come Again

by Bruce Vilanch, Gabriel Barre and Tricia Paoluccio
Simon Friend at the New Wimbledon Theatre until 22nd February

At *Here You Come Again* one felt quite the imposter surrounded by diehard Dolly fans. In Jonathan Harvey's adaptation of *the Dolly Parton Musical*, directed by Barre, we are transported back to the pandemic, including the ritual of banging pots and pans for the keyworkers. For some people, the lockdown was an idyllic time of baking with the kids and burning off the calories with Joe Wicks. But others weren't so lucky, including Kevin, a forty-something singleton, having moved into his parents' attic after extricating himself from a "situationship".



Paul Wills' whimsical attic set transports us back to Kevin's childhood hangout, where his Spiderman bed-set and long abandoned toys are littered between the Christmas decorations and cardboard boxes.

Here we witness his isolation, and its incessant toil on his mental health. He wallows in his failures and self-medicates by downing red wine and cheese puffs. His all-time lows are suddenly lifted by his long-term idol Dolly Parton, who appears in a puff of smoke through one of his posters. She becomes his guardian angel, encouraging Kevin with eternal positivity and endless platitudes.

We are left wondering whether Dolly is some kind of complex hallucination, but what is undeniably real is Tricia Paoluccio's faultless performance as her own lifelong inspiration. She effortlessly embodies the timeless icon without becoming a tribute act. Her wispy voice and southern drawl combined with her no-nonsense talk means that we can't

help but fall in love with her kindness and care.

Steven Webb puts so much energy into capturing the highs and lows of Kevin's emotional rollercoaster. His drag rendition of banger *Why'd You Come in Here Lookin' Like That* is a highlight, as is his comic accompaniment to Dolly's anthem *Jolene*.

Backing singers double up as secondary characters such as Kevin's parents, his ex, and his ex-boss, while the band appear at pivotal moments, providing live music to make this story zing, as it moves to the finale's medley of Dolly's classic songs.

Whether or not you are a Dolly superfan, or someone in search of a musical extravaganza, the story is relatable to those who struggle with loneliness and melancholy, but is truly a memorable night out.



Read Thea Diamond's review at www.markaspen.com/2025/02/20/here-come-dolly

Photography by Hugo Glendinning

A Real Race Around the World

devised with David Hovatter

The Questors at the Studio, Ealing until 22nd February

Ever since its first circumnavigation people, fictional or real, have been trying to get around the world ever faster. Phileas Fogg took eighty days, while Puck put a girdle round the earth in forty minutes.

The zenith was reached in 1889, when *New York World's* journalist Nellie Bly set off across the Atlantic to beat Phileas Fogg's fictional eighty-days. Meanwhile, a fledgling *Cosmopolitan* sent writer Elizabeth Bisland west, in an attempt to outdo her. *A Real Race Around the World* is director David Hovatter's depiction of this contest. With a cast of eight plus one musician and eight chairs, this devised piece presents not one, but two global journeys.



His all-female cast lean into the monochrome setting, with Jenny Richardson's wardrobe of corsets, frocks and pinstripes courtesies. This journey through the colonial late nineteenth century world distinctly carries an appropriate steampunk aesthetic. Nellie and Elizabeth sport goggles on their striking hats, as the cast mimes its way through ocean crossings, typing pools, textile factories, and train journeys.

The story is punctuated by 1930s jazz and swing music by Gareth Bevan on bass guitar. His and the multi-talented cast's songs entertain as they move the story along.

Fionna Gough and Asha Gill shine as Nellie Bly and Elizabeth Bisland respectively. They perform a plethora of intricate dialogue, in impeccable American accents, from the two journalists' accounts of their journeys. There is room for comedy in this brisk tale. Gough gives a convincing performance of seasickness during a choppy sea voyage, and Gill revels in describing attractive gentlemen.

Hannah Victory plays John Cockerill, the *New York World's* sharp editor, constantly on the verge of banging the desk. As John Brisben Walker, editor of *Cosmopolitan*, Jennifer Nettles is somewhat calmer, apart from loudly exclaiming "crap" at every setback. The ensemble of Rebecca Llanes, Kate Kasampali, Phoebe Fitzgerald and Falko all have their moments to shine, through dance, song, and wonderfully-timed comedy.

A Real Race Around the World celebrates female achievement in a time when there were few women journalists, let alone globe-trotting adventurers. It is a hugely entertaining, breathless romp of a show that runs faster than its characters' quest to circumnavigate the globe.



Read Andrew Lawston's review at www.markaspen.com/2025/02/15/real-race

Photography by Paula Robinson

What Dreams May Come

based on William Shakespeare

English Touring Opera at the New Diorama Theatre and on tour until 25th April

Valerina Ceschi's collection of Shakespeare's song settings showcases impressive talent across a broad musical range: Henry Purcell, Thomas Arne, Gerald Finzi, Amy Beach, Joseph Haydn, Benjamin Britten, and Franz Schubert. It's a forlorn hope that these fragments, wrenched from context, could be reassembled into a musically and dramatically coherent jigsaw. But what fun to try!

One is confronted by an intensive care ward as the setting. What really takes the breath away is that the bed is occupied by Bottom from *A Midsummer Night's Dream*, still wearing his ass's head. This fabulous start misleads, as it promises something comic that never materialises. After an unaccompanied version of Ernest Moran's *Under the Greenwood Tree* (er, in a hospital ward?), the ass's head is removed to reveal the gaunt face of a man in the last stages of illness, actually a superb puppet by Matt Hutchinson.



This show is about memory, regret, pain, death, the powerlessness of sickness in old age, but also new life. It is deadly serious. The mood would be killed stone dead by the comic whiff of bedpans, yet Lily Arnold's designs deploy extensive medical kit, including x-ray slides, white coats, and intravenous drips.

The man reminisces about a picnic with his fiancée (*It Was a Lover and His Lass*) and is visited by family with a new baby (*Who is Sylvia?*). As he continues to reminisce, death intervenes.

Here is a mixture of brilliant ideas that don't quite work (butterflies and parakeets in a hospital ward?), and some moving moments of stillness. The puppet is astonishingly affecting, as it shows the passivity of being a patient. The opening of venetian blinds to reveal a garden and later a gigantic moon delivers splendid *coups de théâtre*.

Mezzo Emily Hodkinson is the finest of the singers, with an appealing slightly smoky timbre. Alys Mereid Roberts loses sweetness as she climbs up the stave, a pity as her coloratura is impressive. Tamsanqa Tylor Lamani, a light tenor, acts well. Samuel Pantcheff, an appealing baritone, has further potential. Erika Grundesen fields an impressive group of accompanists, even if we only briefly hear them on their own in *Dance of the Winds*, from Purcell's *The Tempest*.



Read Patrick Shorrock's review at www.markaspen.com/2025/02/16/what-dreams

Photography by Richard Hubert Smith

Mary, Queen of Scots

by Thea Musgrave

English National Opera, and San Francisco Opera, at the London Coliseum

The political elite of Scotland are in conflict with each other and with cousins south of the border; there is infighting within various factions; and bubbling religious enmities find violent expression. No, not Scotland of the SNP, but the turbulent years (1561-68) its eponymous Queen spent in Scotland.

Riggers, in modern clothing, assemble the framework of a large marquee. The set is still being built in director Stewart Laing's clever metaphor for the nation of Scotland and as an allegory for Mary's tenure of her throne, impermanent and ultimately insubstantial against the ambitions of her competing Lords.



Thea Musgrave is a remarkably expressive composer, and her musical scenography creates a threatening atmosphere. As the dynamics of power play out, the music excels. Joana Carneiro conducts the ENO Orchestra with vibrancy and verve that brings out its potency and passion.



Solo cor-anglais describes the mood of the Queen's arrival from France at the desolate dockside in Leith. Yet she is home, regal and ready to resume her rule that has been usurped by errant regents; and now by three ambitious lords: the manipulative James Stewart (the steely baritone Alex Otterburn); the divisive Lord Darnley (Rupert Charlesworth's lively tenor), a drunkard, easily led; and the brutal and misguided Earl of Bothwell (played by the incomparable John Findon).

American soprano Heidi Stober shines in the demanding role of the eponymous Queen, with an imposing stage presence. Her amazing voice never falters, be it in the powerful expression of the Queen's control of her court, the tender lullaby to her new-born baby, or the problem of reigning as a woman in a country of power gourmands.

Ultimately, the machinations of "three stars of her firmament", their scheming and their violence leave Mary in an impossible position politically. As she is forced to abdicate and leave Scotland for exile in England, Mary cuts a pitiful figure. Her fears are for her baby son, whom she is obliged to abandon, now King James VI of Scotland (later also to be England's King James I).



This intense and compelling story, although not historically precise, is expressed in dramatic and powerful music. With its outstanding cast, *Mary, Queen of Scots* distils the essence of a tumultuous time in Scots' history.

Read Mark Aspen's review at www.markaspen.com/2025/02/17/mary-queen-scots

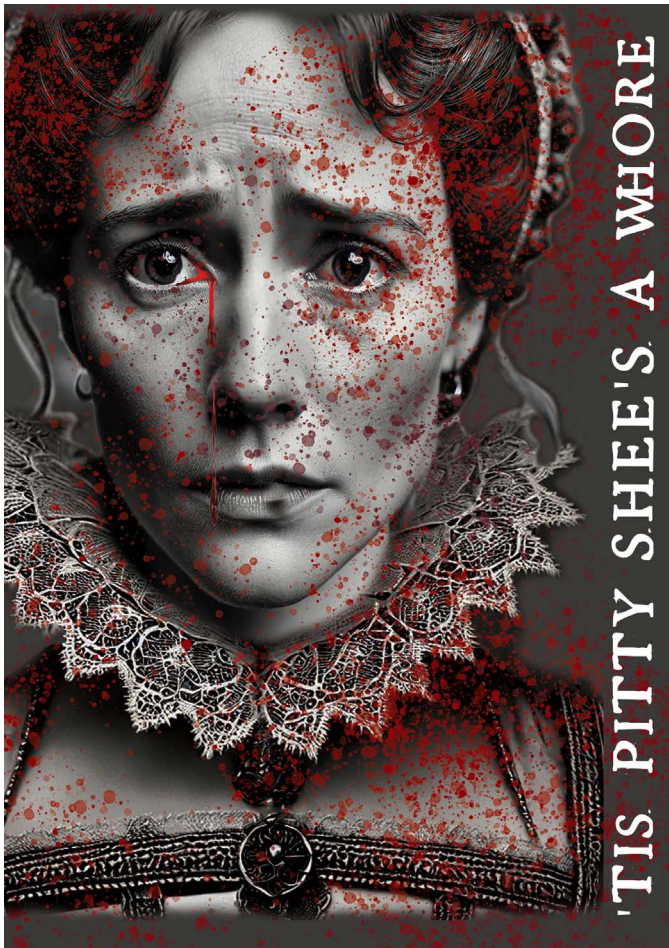
Photography by Ellie Kurttz

While The Sun Shines And 'Tis Pitty Shee's A Whore

At The Mary Wallace Theatre

Two forthcoming and very different productions are currently jostling for rehearsal space at the Mary Wallace Theatre in Twickenham.

Terrence Rattigan's wartime comedy *WHILE THE SUN SHINES* offers a glimpse of how the thrill of love flourished even as the bombs fell. The Earl of Harpenden is on leave from the Royal Navy in order to marry the lady Elizabeth, but when two rival suitors and one of the bridegroom's old flames turn up the stage is set for a delight of romantic entanglements and mistaken identities as the protagonists grasp at fleeting happiness amid the uncertainties of wartime. Rattigan's sparkling 1943 comedy returns to the stage from March 15th-22nd to entertain with its archetypal English wit and panache.



....and as a complete contrast, John Ford's 1632 high Jacobean tragedy *'TIS PITY SHEE'S A WHORE* follows in April.

In defiance of Church and State, Annabella and Giovanni, brother and sister, are lovers. Their incestuous relationship inevitably bears fruit leading on to violent and horrifying consequences. Discovery, retribution, poisoning and murder follow in Ford's greatest and most powerful work. Later than Shakespeare but rivalling The Bard in poetic and passionate verse and tragic roles, *'TIS PITY* plays from April 19th-26th. Booking opens on March 24th.

For tickets for *WHILE THE SUN SHINES* or information on both productions visit us at www.richmondshakespeare.org.uk



Find us on Twickenham's Embankment, close to the Barmy Arms.

Spring Blooms in the Royal Parks

From The Royal Parks

As the days grow longer and the air fills with birdsong, the first blooms of spring begin to emerge in the Royal Parks. These delicate flowers are a sign of nature's renewal, brightening up our landscapes after the long winter months. Whether you're looking for a peaceful stroll or the perfect photo opportunity, here's where to find the best early spring blooms in the parks, along with their Latin botanical names, peak blooming months, and fascinating facts.

Snowdrops

Botanical name: *Galanthus nivalis*

Best in bloom: Late January – February

Where to find them: Hyde Park, Kensington Gardens, Green Park, and St. James's Park



Fun fact: The name Galanthus comes from the Greek words for 'milk' and 'flower', referencing its pure white petals. These hardy blooms have a natural antifreeze in their cells, allowing them to survive frost and snow.

Crocuses

Botanical name: *Crocus vernus* & *Crocus tommasinianus*

Best in bloom: February – March

Where to find them: The Broad Walk in Regent's Park, Richmond Park



Fun fact: Crocuses close their petals at night and during cloudy weather to protect their pollen—a phenomenon known as 'nyctinasty.'

Daffodils

Botanical name: *Narcissus* spp.

Best in bloom: March – April

Where to find them: St. James's Park, Green Park, and The Regent's Park



Fun fact: The daffodil's sap contains crystals that deter animals from eating them. They are also the national flower of Wales and are traditionally worn on St. David's Day.

Iris

Botanical name: *Iris reticulata* & *Iris germanica*

Best in bloom: February – April

Where to find them: The Regent's Park and Hyde Park



Fun fact: The iris has been a symbol of royalty and wisdom for centuries and is often associated with the French fleur-de-lis.

Cherry Blossoms

Botanical name: *Prunus serrulata* & *Prunus avium*

Best in bloom: March – April

Where to find them: The cherry walk in The Regent's Park, Greenwich Park, St. James's Park and Kensington Gardens

Fun fact: Many of the cherry trees in the Royal Parks were gifts from Japan, symbolising friendship and renewal. Their blossoms are celebrated in Japanese culture as a reminder of life's fleeting beauty.



Bluebells

Botanical name: *Hyacinthoides non-scripta*

Best in bloom: April – May

Where to find them: Richmond Park, Bushy Park, and Greenwich Park

Fun fact: Over half of the world's bluebells are found in the UK, and trampling them can prevent regrowth for years.



Blackthorn

Botanical name: *Prunus spinosa*

Best in bloom: March – April

Where to find them: Bushy Park and Richmond Park

Fun fact: Blackthorn is one of the first trees to flower in spring, producing small white blossoms before its leaves appear. It is also used to make sloe gin from its berries in autumn.



Hazel

Botanical name: *Corylus avellana*

Best in bloom: January – March

Where to find them: Richmond Park and Bushy Park

Fun fact: Hazel trees produce golden catkins, often referred to as 'lamb's tails,' which provide an early source of pollen for bees.



St Mary's University

St Mary's Students Achieve BUCS Success

Six students at St Mary's University, Twickenham (SMU) have recently medalled at the British Universities and Colleges Sport (BUCS) Indoor Athletics Championships 2025 and the BUCS Karate Championships 2025. Both of these events are part of the BUCS Nationals.

Intermediate event.

Speaking on her win, Roshelle said, "This was my best performance and the atmosphere at the event was superb. There were people from St Mary's as well as people I didn't even know cheering me on in the finals. It was

such a great experience and a fantastic performance and result for me. It truly is an honour to have represented the University."

Both the BUCS Indoor



Six students at St Mary's University, Twickenham (SMU) have recently medalled at the British Universities and Colleges Sport (BUCS) Indoor Athletics Championships 2025 and the BUCS Karate Championships 2025. Both of these events are part of the BUCS Nationals.

Student Sam Charig took home a Gold medal in the Men's 1500m race, while Ruben Hedman placed second in the Men's 60m Hurdles. Mia Waldman won a Bronze medal in the Women's 3000m event.

In the Karate Championships, student Roshelle Lue Fatt took home Gold in the Kumite Individual Senior-50kg event. Michelle Lue Fatt placed third in the Kumite Individual Senior-55kg event, while Bijan Bayati also won Bronze in the Kata Individual Male

Championships and Karate Championships took place in Sheffield from the 14th to 16th February.

[British Universities and Colleges Sport \(BUCS\)](#) is the national body for delivering competitive higher education sport in the UK. Its aim is to work with member institutions to get more students active, through traditional competitive sport and providing physical activity opportunities.

The St Mary's Cheer club also saw success in Nottingham for a competition where one team were crowned division champions, while the other team placed third. Both stunt groups were also crowned division champions.



St Mary's
University
Twickenham
London

England Team To Play Scotland At Allianz Stadium

England men's head coach Steve Borthwick has named his starting XV to play Scotland for the Calcutta Cup at Allianz Stadium on Saturday 22 February (kick-off 4.45pm, live on ITV1).



Saturday's third-round Guinness Six Nations match will mark the 143rd encounter between England and Scotland, dating back to their first meeting in Edinburgh in 1871.

In the front row, vice-captain Ellis Genge takes his place at loosehead prop, alongside Luke Cowan-Dickie at hooker and Will Stuart at tighthead.

At lock, England captain Maro Itoje is paired with Ollie Chessum, who earns his first start of the Championship, and is the only change to the starting XV which defeated France at Allianz Stadium in round two.

The back row sees Tom Curry on the blindside flank, Ben Earl at openside and Tom Willis at No.8 to round off the pack.

In the half-backs, Alex Mitchell is at scrum-half with Fin Smith at 10. In midfield, Henry Slade is named at inside centre, with Ollie Lawrence at 13.

In the back three, Ollie Sleightholme is named on the left wing, with Tommy Freeman on the right, and Marcus Smith completes the starting line-up at full-back.

On a 6-2 split bench, vice-captain Jamie George, Fin Baxter, Joe Heyes, George Martin, Chandler Cunningham-South, Ben Curry, Harry Randall and Elliot Daly are named as replacements.

"We are looking forward to what will be another challenging and exciting match against Scotland," said Borthwick.

"The Calcutta Cup is a special fixture, and we are determined to perform to our very best in front of our supporters at Allianz Stadium."

ENGLAND v SCOTLAND

Saturday 22 February 2025, Allianz Stadium, Twickenham

Kick-off: 4.45pm (GMT)

15. Marcus Smith (Harlequins, 41 caps)
14. Tommy Freeman (Northampton Saints, 17 caps)
13. Ollie Lawrence (Bath Rugby, 33 caps)
12. Henry Slade (Exeter Chiefs, 71 caps)
11. Ollie Sleightholme (Northampton Saints, 6 caps)
10. Fin Smith (Northampton Saints, 8 caps)
9. Alex Mitchell (Northampton Saints, 20 caps)

Replacements:

16. Jamie George (Saracens, 98 caps) – vice-captain
17. Fin Baxter (Harlequins, 7 caps)
18. Joe Heyes (Leicester Tigers, 9 caps)
19. George Martin (Leicester Tigers, 21 caps)

1. Ellis Genge (Bristol Bears, 68 caps) – vice-captain
2. Luke Cowan-Dickie (Sale Sharks, 46 caps)
3. Will Stuart (Bath Rugby, 47 caps)
4. Maro Itoje (Saracens, 90 caps) – captain
5. Ollie Chessum (Leicester Tigers, 25 caps)
6. Tom Curry (Sale Sharks, 58 caps)
7. Ben Earl (Saracens, 39 caps)
8. Tom Willis (Saracens, 3 caps)

20. Chandler Cunningham-South (Harlequins, 12 caps)
21. Ben Curry (Sale Sharks, 8 caps)
22. Harry Randall (Bristol Bears, 12 caps)
23. Elliot Daly (Saracens, 70 caps)

England Men's A Squad To Face Ireland A At Ashton Gate

The England Men A matchday 23 to face Ireland A at Ashton Gate has been confirmed, with tickets available [here](#).



Lee Blackett's squad have trained out of Bristol Bears' High Performance Centre this week and make the short journey across Bristol this Sunday (23rd, 13:00 GMT kick-off) for the side's second fixture of the campaign. The match will be streamed live for free on RugbyPass TV.

Leicester Tigers scrum-half Jack van Poortvliet has been awarded the captaincy of the team for the match. The 2021 U20 Men's grand-slam winning skipper leads his country once more, having earned 16 senior men's caps to date and is partnered by Charlie Atkinson (Gloucester Rugby) to form the half-back pairing.

Curtis Langdon of Northampton Saints will take on the leadership role of vice-captain for the visit of Ireland A. Another former grand-slam winner with the U20 Men's side in 2017, the hooker won the Gallagher Premiership with Saints in 2024 and made his two appearances to date with the England senior men in 2021.

Phil Brantingham (Saracens), Will Butt (Bath Rugby), Tobias Elliott (Saracens), Ollie Hassell-Collins (Leicester Tigers), Jack Kenningham (Harlequins), George Kloska (Bristol Bears), Tom Lockett (Northampton Saints) and Van Poortvliet will earn their first minutes for the England Men's A side this Sunday.

In a 5-3 split on the bench, Gabriel Oghre (Bristol Bears), Tarek Haffar (Northampton Saints), Luke Green (Northampton Saints), Richard Capstick (Exeter Chiefs), Greg Fisilau (Exeter Chiefs), Will Porter (Harlequins), Jamie Shillcock (Leicester Tigers) and George Hendy (Northampton Saints) are named as replacements.

Lee Blackett said: *"Players and staff from across the RFU and Premiership Rugby have embraced the challenge of working with three training days and implementing the brand of rugby we want to play. It's been a pleasure to work with this talented and varied group this week - it's kind of test you savour as a coach.*

"Nine of the squad involved against Australia A have since been involved in England senior camps, with four of them going on to achieve further caps. The opportunity in front of players this Sunday is clear.

"It'll be great to take the Men's A side to another big rugby city in Bristol following on from Leicester and London in 2024, and we're all excited for a strong, physical test against Ireland A this weekend."

Tickets for England A vs. Ireland A at Ashton Gate Stadium in Bristol are available from £20 for adults and £5 for U12s* and can be purchased [here](#). *booking fees apply

England Men's A team to face Ireland A (includes current club, community club and senior men's caps)

15 Joe Carpenter (Sale Sharks, West Park Leeds RUFC)	1 Phil Brantingham (Saracens, Northern FC)
14 Tobias Elliott (Saracens, Harrow Rugby Club)	2 Curtis Langdon (vc) (Northampton Saints, Hornets Rugby Club, 2 caps)
13 Max Ojomoh (Bath Rugby, Chippenham RFC)	3 George Kloska (Bristol Bears, St. Brendan's RFC)
12 Will Butt (Bath Rugby, Wimborne RFC)	4 Hugh Tizard (Saracens, Guildfordians RFC)
11 Ollie Hassell-Collins (Leicester Tigers, Newbury RFC, 2 caps)	5 Tom Lockett (Northampton Saints, Northampton Saints)
10 Charlie Atkinson (Gloucester Rugby, Oxford RFC)	6 Tom Pearson (Northampton Saints, Bromyard Rugby Club, 1 cap)
9 Jack van Poortvliet (c) (Leicester Tigers, North Walsham RFC, 16 caps)	7 Jack Kenningham (Harlequins, Richmond RFC)
	8 Alfie Barbeary (Bath Rugby, Banbury RUFC)
Replacements	
16 Gabriel Oghre (Bristol Bears, Walcot RFC)	20 Greg Fisilau (Exeter Chiefs, Devonport Services RFC)
17 Tarek Haffar (Northampton Saints, Grasshoppers RFC)	21 Will Porter (Harlequins, Amersham and Chiltern RFC)
18 Luke Green (Northampton Saints, Richmond RFC)	22 Jamie Shillcock (Leicester Tigers, Southam RUFC)
19 Richard Capstick (Exeter Chiefs, Taunton Rugby Football Club)	23 George Hendy (Northampton Saints, Shipston-on-Stour RFC)

England Men A 2024/25 fixtures and results

- Sunday 17th November 2024 – England A 38-17 Australia A – Twickenham Stoop, 14:00 GMT kick-off
- Sunday 23rd February 2025 – England A vs. Ireland A – Ashton Gate, 13:00 GMT kick-off

Frank: The key to our recent good away form

Written by Brentford Football Club

Brentford head coach Thomas Frank has revealed the key to the Bees' recent good away form, which has seen them win three games in a row for the first time in the Premier League; this positive run could be extended to four when the west Londoners travel to Leicester City on Friday night, live on Sky Sports; Frank: "The team is growing even more this season... we are also always looking to see how we can add layers and become even better"

Brentford head coach Thomas Frank has discussed the key to his side's recent good form on the road, which has seen the Bees win three away games in a row for the first time in the Premier League.



The west Londoners are looking to make it four on the bounce on Friday, when they travel to Leicester City for a game under the lights at King Power Stadium, live on Sky Sports.

Frank stated: *"In general, our away performances have been quite good; it's about trying to put as many of those together as possible."*

"We were getting closer and closer [to the first away win of the season] - a draw against Everton and a draw against Brighton - and then we got three very good wins in a row."

"Especially Crystal Palace and West Ham, where we were winning by one goal, which is just one bad decision away from losing that lead."

"The team is growing even more this season."

Frank added: *"For the last however many games we have been able to name the same team, maybe changing one player - [Ethan \[Pinnock\] will come in for Sepp \[van den Berg\] on Friday](#), for example - but that consistency has really helped."*

"We are also always looking to see how we can add layers and become even better."

On Friday's opposition, Leicester, Frank added: *"They have been fairly good in their 4-4-2... but they can go high and I expect them to press us tomorrow night. They are dangerous when they go forward."*

"It's going to be tricky and a very difficult game because they will come flying out. It will mean a lot for them if they can win and get out of the relegation zone, even just for one day."

"We respect them massively, they have a lot of good players and a good coach - but, on the flip side, we need to focus on us, what we have done well, trust our own processes and structure, and make sure we come with the right mentality and attitude."



Report and reaction: Leicester City 0 Brentford 4

Yoane Wissa, Bryan Mbeumo, Christian Nørgaard and Fábio Carvalho on target as Brentford beat Leicester City 4-0 at King Power Stadium; the Bees record a fourth straight away win in the Premier League for the first time in the club's history; Thomas Frank: "It's difficult to win in the Premier League, difficult to win away from home, and the way we did it 4-0 is very impressive"

Written by Brentford Football Club

Brentford recorded a fourth straight away win in the Premier League for the first time in the club's history, beating Leicester City 4-0 at King Power Stadium on Friday evening.

The damage was done before the break; Yoane Wissa, Bryan Mbeumo and Christian Nørgaard on target as Thomas Frank's side blew the Foxes away with a dominant first-half performance under the floodlights. Substitute Fábio Carvalho added a fourth goal during the closing stages.

Ethan Pinnock replaced the injured Sepp van den Berg, while Mathias Jensen was not included in the squad.

Leicester carved out the first chance. Woyo Coulibaly's cross from the right was blocked by Pinnock and the full-back's effort on the follow-up was well saved by Mark Flekken at his near post.

Flekken was called into action again moments later, making a sprawling stop to deny Jamie Vardy after the experienced forward latched on to El Khannouss's through ball and raced towards goal.

Brentford gained a foothold after the Foxes' flying start. Nathan Collins carried the ball forward and found the overlapping Kristoffer Ajer to his right. The Norwegian's cross dropped kindly for Kevin Schade, but his shot was blocked by Coulibaly.

The west Londoners took the lead on 17 minutes. Mikkel Damsgaard seized possession deep in Leicester territory following a duel between Nørgaard and Boubakary Soumaré and expertly lifted the ball into the path of Wissa, whose effort kissed the inside of the post on its way into the net.

Vardy's fierce drive was parried by Flekken as the Foxes went in search of an immediate equaliser - but the second goal went the way of the visitors.

Nørgaard sparked a quick transition, Damsgaard threaded a pass to Mbeumo on the right and the Cameroon international - as we have seen so many times before - shifted the ball onto his left foot and curled into the far corner.

Frank cut an animated figure on the sidelines, clearly eager for the Bees to maintain their quality and intensity - and his players did not disappoint.

Mbeumo turned provider as the visitors extended their advantage, whipping a free-kick towards the front post. Nørgaard darted across Vardy and rose highest to head the ball beyond a helpless Mads Hermansen.

Schade was denied by the post in stoppage time, while Keane Lewis-Potter's close-range finish was overturned by VAR for handball, as Brentford finished the first half on top.



Hermansen made a sublime stop midway through the second half, diving to his right and getting a strong hand to substitute Yehor Yarmoliuk's close-range header.

Wissa's fizzing cross then narrowly evaded Ajer who had been left in space inside the six-yard box.

Brentford continued to push for a fourth as the rain lashed down in Leicester. Wissa received a short pass from Carvalho, drove into the box and saw his low drive blocked by Wout Faes.

Facundo Buonanotte's curling effort from the edge of the box flashed wide of Flekken's right post as the game approached its conclusion.

But there was still time for the Bees to add another. Mbeumo outmuscled Victor Kristiansen and had a shot parried by Hermansen. Wissa prodded the loose ball towards Carvalho, who slotted home from 10 yards to round off a superb night for Frank's side.

Leicester City: Hermansen; Coulibaly (Vestergaard HT), Okoli (Coady 83), Faes, Kristiansen; Ndidi (Skipp 77), Soumaré; De Cordova-Reid (Mavididi HT), El Khannouss, Ayew (Buonanotte 55); Vardy

Subs not used: Stolarczyk, Thomas, Winks, Daka

Brentford: Flekken; Ajer (Kayode 83), Collins, Pinnock, Lewis-Potter; Nørgaard (Yarmoliuk HT), Janelt (Maghoma 72), Damsgaard (Carvalho 72); Schade (Konak 87), Wissa, Mbeumo

Subs not used: Valdimarsson, Mee, Ji-soo, Morgan

Frank praises defence and 'dangerous' attack

Brentford head coach Thomas Frank was delighted with the way his side comprehensively beat Leicester City on Friday evening.

"It was a very, very good win, of course," said Frank. "It's difficult to win in the Premier League, difficult to win away from home, and the way we did it 4-0 is very impressive."

"We did what we didn't manage to do last weekend against West Ham in the first half, which was more or less killing the game off."

"It was very impressive, the way we went forward, we look so dangerous with our front four; the runners of Kevin [Schade] and Bryan [Mbeumo], but also [Yoane] Wissa and the creator in Mikkel Damsgaard behind."

"On the flip side, I think it's a big praise to the defence for keeping another clean sheet - that's a team thing, of course - but the back four did well."

"And when we needed Mark, that situation against Jamie Vardy... sometimes in a game you need a good goalkeeper!"

Damsgaard: I'll push to be the best possible version of myself

Mikkel Damsgaard admitted that he is pleasantly surprised by his form this season.

The midfielder created two of Brentford's four goals against Leicester, taking his assist tally to 10 this campaign.

"It's amazing," he said. "Hopefully I can continue making assists for my team-mates."

"I didn't think it would go this well. I'm happy to be playing every week. I'll push to be the best possible version of myself."



433 editions of the **Twickenham & Richmond Tribune** online - Lots to read: News, Reviews, History, Sports and On-going Sagas in the Borough of Richmond upon Thames



Half Page

Quarter Page
Landscape

Quarter Page Portrait

Eighth Page

Eighth Page
Landscape

Example advert sizes shown above

Thousands read The Twickenham & Richmond Tribune

If you are reading this you could be advertising your business with
The Twickenham & Richmond Tribune. Community rates are
available

Contact: advertise@TwickenhamTribune.com

View ad details at www.TwickenhamTribune.com/advertise

Contact

contact@TwickenhamTribune.com
letters@TwickenhamTribune.com
advertise@TwickenhamTribune.com



Published by:

Twickenham & Richmond Tribune (in association with World InfoZone Limited)

Registered in England & Wales

Reg No 10549345

The Twickenham Tribune is registered with the ICO under the Data Protection Act, Reg No ZA224725

©Twickenham & Richmond Tribune. All rights reserved. No part of this publication may be used or reproduced without the permission of Twickenham & Richmond Tribune. While we take reasonable efforts, this online newspaper cannot be held responsible for the accuracy or reliability of information. The views and opinions in these pages do not necessarily represent those of The Twickenham & Richmond Tribune.

[Terms & Conditions](#)